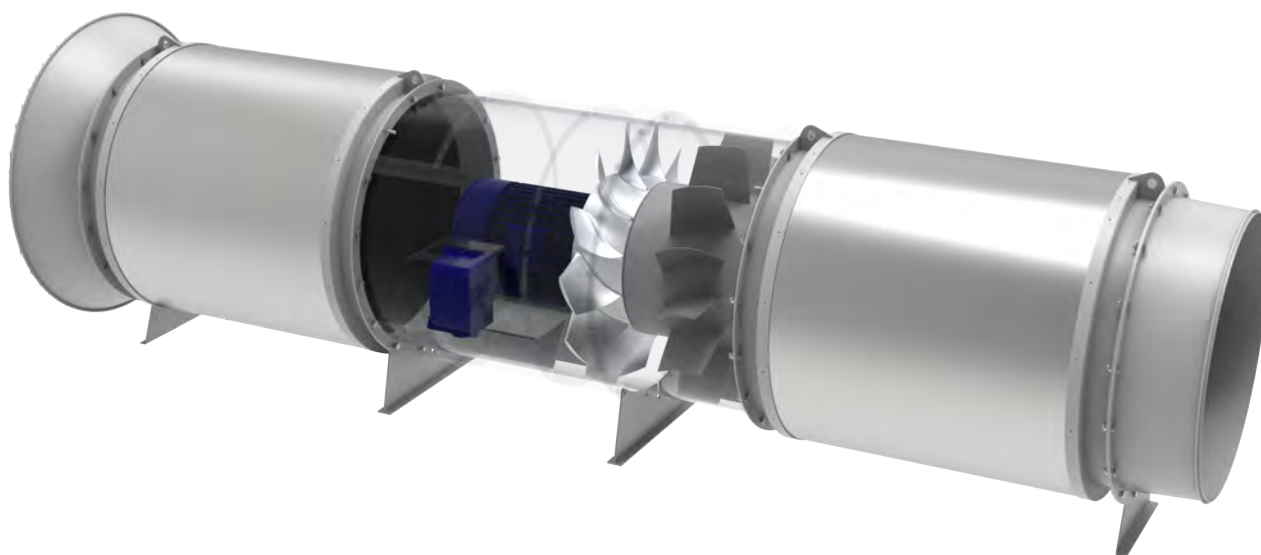


CC1070

IN BRIEF

The CC1070Mk2 is a newly designed series of vane Axial Fans. Designed specifically for demanding underground conditions the CC1070Mk2 is tailored for ducted applications and long pushes. Available as single or twin stage with flow rates up to 32m³/s and pressures up to 2kPa per stage. The CC1070 uses fixed pitch cast impellers for increased efficiency and longevity.



KEY POINTS

- 1 Co-Rotating High Efficiency Design
- 2 High Pressure Applications
- 3 Fixed Pitch One Piece Castings
- 4 Single or Twin Stage Configurations
- 5 Flow Rates from 13m³/s to 32m³/s
- 6 Pressures from 200Pa to 2000Pa per Stage

SPECIFICATIONS

DESCRIPTION	FAN SPEED	STAGES	PEAK PRESSURE	MAX VOLUME	BLADE ANGLES	MOTOR SIZE
CC1070Mk2 Axial Fan Twin Stage	1495RPM	2	4kPa	32m ³ /s	65 Degrees	2 x 55kW
CC1070Mk2 Axial Fan Twin Stage	1495RPM	2	3.8kPa	29m ³ /s	60 Degrees	2 x 45kW
CC1070Mk2 Axial Fan Twin Stage	1495RPM	2	3.4kPa	23m ³ /s	50 Degrees	2 x 30kW
CC1070Mk2 Axial Fan Single Stage	1495RPM	1	2kPa	32m ³ /s	65 Degrees	1 x 55kW
CC1070Mk2 Axial Fan Single Stage	1495RPM	1	1.9kPa	29m ³ /s	60 Degrees	1 x 45kW
CC1070Mk2 Axial Fan Single Stage	1495RPM	1	1.7kPa	23m ³ /s	50 Degrees	1 x 30kW

IMPELLER SPECIFICATIONS	DESCRIPTION
Impeller Material	Aluminium Alloy
Design	High Efficiency Fix Pitch One Piece Castings
Casting Method	Vacuum Moulding
Finish	Bare Aluminium, Epoxy Coatings on Request

FAN SPECIFICATIONS	DESCRIPTION
Fan Design	Co-Rotating
Fan Stages	Single or Twin Stage Configurations
Motor Power	30kW 45kW or 55kW Per Stage
Internal Diameter	1067mm
Casing Thickness	6mm
Casing Finish	HD Galvanising, Paint Finish on Request
Flange OD	1185mm
Hole PCD	1125mm
Number of Holes	16
Hole Size	18mm
Hole Orientation	Offset from Top Dead Center
Lifting Mechanism	Full Length Lifting Bar with 40mm Holes
Serial Numbering	Laser Cut Stainless Steel Plates
Airflow And Rotor Direction	PolyCarbonate Arrows on Casings

MOTOR SPECIFICATIONS	DESCRIPTION
Windings	H Class Custom Specification
Insulation	Double H Class Insulation
Efficiency	>94%
Voltage	415V, 525V, 690V and 1000V
Frequency	50Hz
Poles	4P
Speed	1485RPM
Frame	D200 / D225
Mounting	Flange Mounting
Leads	1m Extended From Casing
Terminal Box	External on Fan Casing
Terminal Box Protection	Steel Guard around Box