

Capability Statement



Company Overview

Clemcorp is the only company to trust with engineering your ventilation solution.

Clemcorp is a leading supplier of underground ventilation equipment with fans currently in more than 30 countries. We have been assisting mining companies with innovative ventilation solutions across Australia and globally for over 30 years.

The company's head office, engineering and manufacturing facility is located in Perth, Western Australia with additional agencies in South Africa and Mongolia. Our 20,000sqm manufacturing and engineering facility is the largest dedicated fan design and assembly plant in Australia.

We specialize in the design, manufacture, hire and supply of high efficiency Axial, Centrifugal and Mixed flow fans, Ventilation Control Devices and Flexible Ventilation Ducting.

REGIONS OF SUPPLY



 Mine sites
  Agency

OUR CORE COMPETENCIES

- Long standing team of engineers and tradespeople with over 150 years of experience and mining ventilation expertise.
- Supply and Installation of Turnkey Ventilation Solutions.
- Capable of large motor testing which is available to hire.
- Commitment to quality, reliability, efficiency and workmanship.

OUR CORE PRODUCTS & SERVICES

- Axial, Centrifugal and Mixed Flow Fans Design and Manufacture
- Fan testing including performance testing to ISO 5801
- Ventilation on Demand (VOD) Systems and Application Engineering Support
- Site Installation and Support
- Flexible Ventilation Ducting
- Design and Manufacture of Various Ventilation Control Devices:
 - Automated Ventilation Louvre Regulators
 - Automated Butterfly Damper Regulators
 - Airlock Doors and Access Doorways
 - Drop Board Regulators
- Overhaul, Service and Testing of all fan types

OUR FACILITIES

- 20,000m² Facility with 5700m² under-Roof factory.
- 4 x 15t Overhead Gantries with dual lifting capacity to 30t
- ISO5801 High Capacity Fan Testing Chamber up to 3m in Diameter
- In-House Industrial Laboratory testing facilities up to 1,200kW motors.
- 8m x 10m x 5m Sandblasting Facilities with overhead crane access
- 8m x 15m Cross Flow Paint Booth with overhead crane access
- Schenk Dynamic Balancers supporting up to 3m Diameter Rotors.
- Advanced Additive Manufacturing Printers supporting rapid prototyping.



RECENT PROJECT HISTORY AND CASE STUDIES

Boston Shaker

Mine Primary Ventilation System

Clemcorp designed, supplied and installed a future proof primary ventilation system for AngloGold Tropicana. Complete with 20t twin monorail beams and currently fitted with a CC2400 (1 x 560kW) Booster Fan.



Havieron Gold Mine

Supply of Parallel Fan Bulkhead System

Clemcorp designed and supplied a parallel fan set up and associated bulkhead framework. Bulkhead fitted with 3 off CC1400 Mk4 (2x110kW). An airlock door was also supplied to allow personnel access.



RECENT PROJECT HISTORY AND CASE STUDIES

Lake Cowal

Supply of Butterfly Dampers, Louvers & Control Stations

Clemcorp supplied an underground vent control system which included 28 automated butterfly dampers with in-duct ultrasonic airflow sensors, 14 automated louver regulators and 14 custom control stations.



Sunrise Dam

Mine Primary Ventilation System

Clemcorp Designed and Supplied two CC2650 (1 x 950kW) 3300V Booster Fans complete with U/G Wheel Mounted MCC Switchroom with VVVF Drives. The system includes dual 20t Overhead Monorail Installations, Counterweighted Isolation Dampers and a Maestro Digital Mine Monitoring System.



RECENT PROJECT HISTORY AND CASE STUDIES

Spotted Quoll Installation

Mine Primary Ventilation System

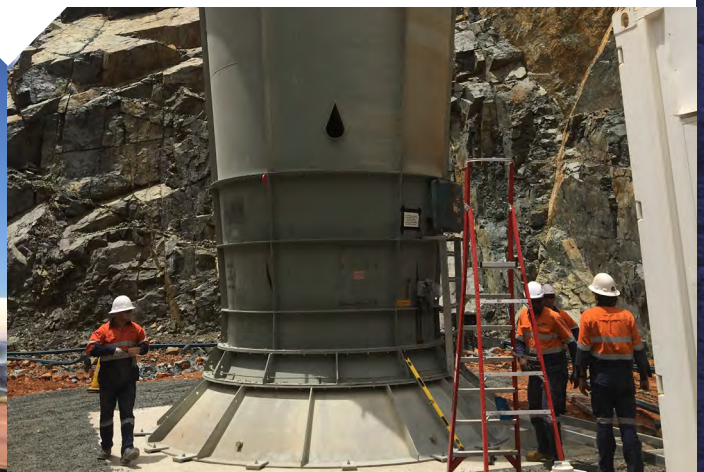
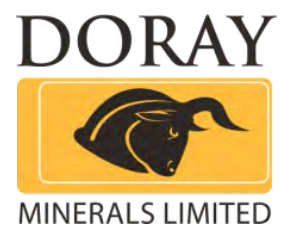
Three 2.26m diameter 470kW axial fans were overhauled by Clemcorp to meet the primary ventilation requirements at Spotted Quoll. Scope included fan overhaul and testing, civil design, project management, construction and installation.



Doray Minerals

Mine Primary Ventilation System

One 2.8m diameter 600kW axial fan was decommissioned by Clemcorp and overhauled at our West Australian facility. The fan was fully tested and subsequently installed at an alternate site by the Clemcorp Team.



RECENT PROJECT HISTORY AND CASE STUDIES

St Barbara Mines

Environmental Telemetry System for Primary Ventilation Fans



A Vigilante AQS Environmental Telemetry package from Maestro Mine Ventilation in Canada was supplied and retrofitted by Clemcorp to the twin centrifugal primary fans at a St Barbara Mine.

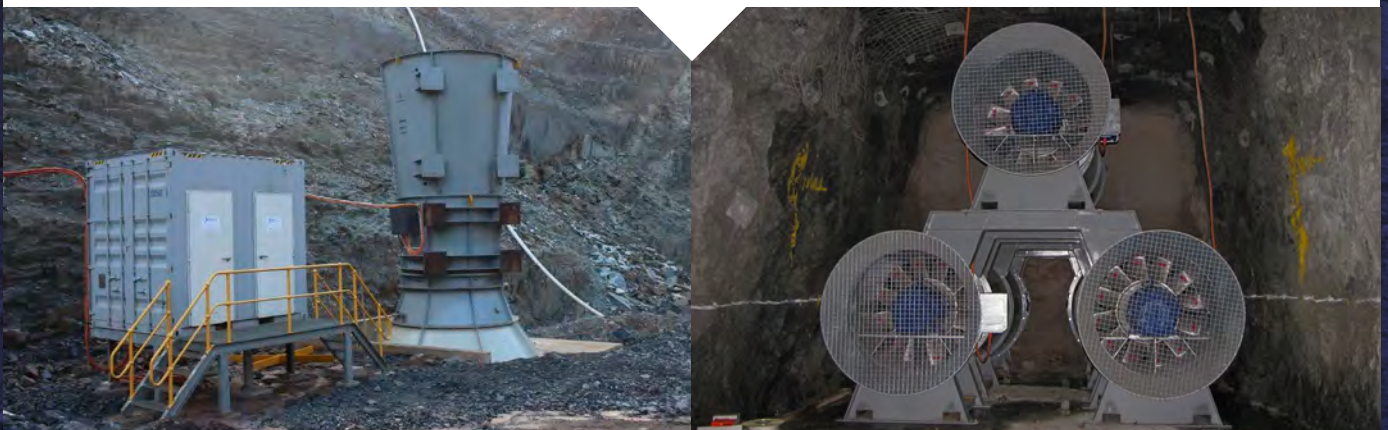


Saracen Gold Mines

Mine Primary Ventilation Systems



A 2.45m diameter 350kW axial fan in a vertical surface configuration was supplied and installed along with a complementary electronic soft starter in a custom built switchroom at one mine. A parallel fan system in a horizontal bulkhead configuration was supplied to the other mine, consisting of three 1.4m diameter 110kW axial fans and associated infrastructure including support frames, switchgear and isolation doors.



CLEMCORP AUSTRALIA

338 Gnangara Road,
Landsdale Western Australia 6065
PO Box 4249, Alexander Heights

PHONE (08) 9406 3000

FAX (08) 9406 3001



clemcorp.com.au