

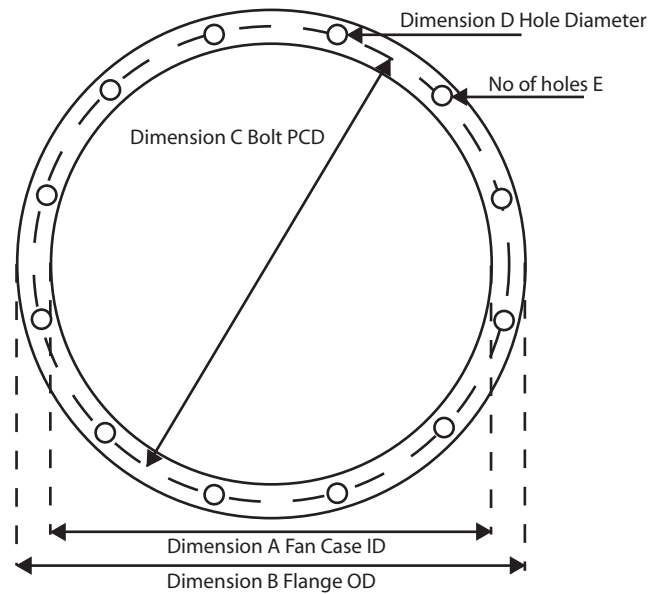
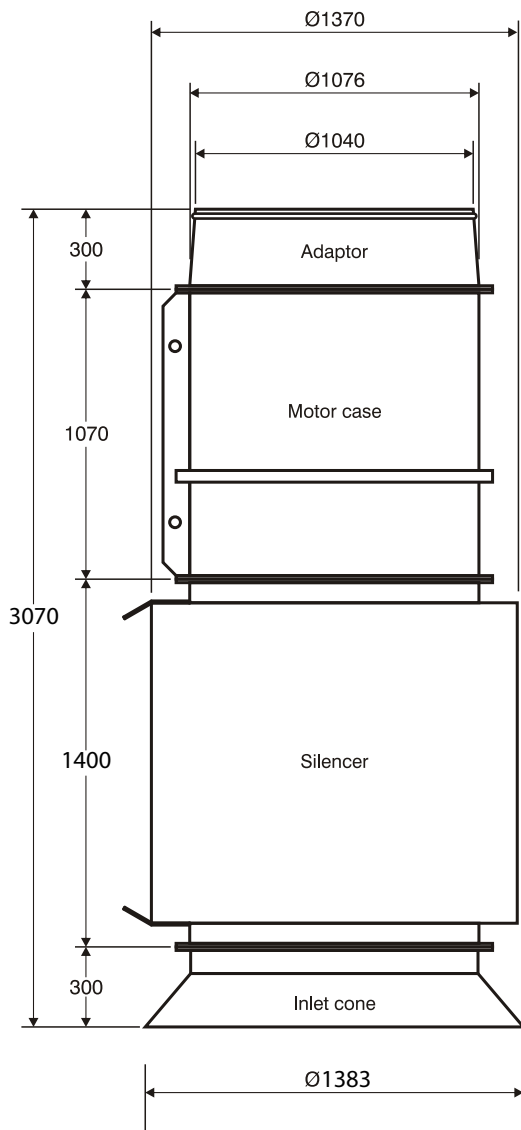
CC1070 Single Stage General Arrangement Diagram



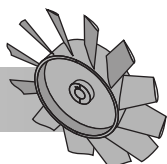
63 Christable Way
Landsdale 6065
Western Australia
Tel: +61 8 9249 9022
Fax: +61 8 9249 9126

website: www.clemcorp.com.au
email: sales@clemcorp.com.au
ABN: 54 115 959 683

- 1 x 37 kW , 30kW
- Fully Cast One - Piece Aluminium Alloy Impeller
- 1070mm Diameter Casing



Fan Type	A' Case ID	B' Flange OD	C' P.C.D	D' Hole Diameter	E' No of Holes
CC1070	1073	1185	1125	18mm	16
Approximate Weights					
Fan				900	
Silencers				140	
Total				1040	



Go with the flow....

CC1070 Single Stage Axial Fan

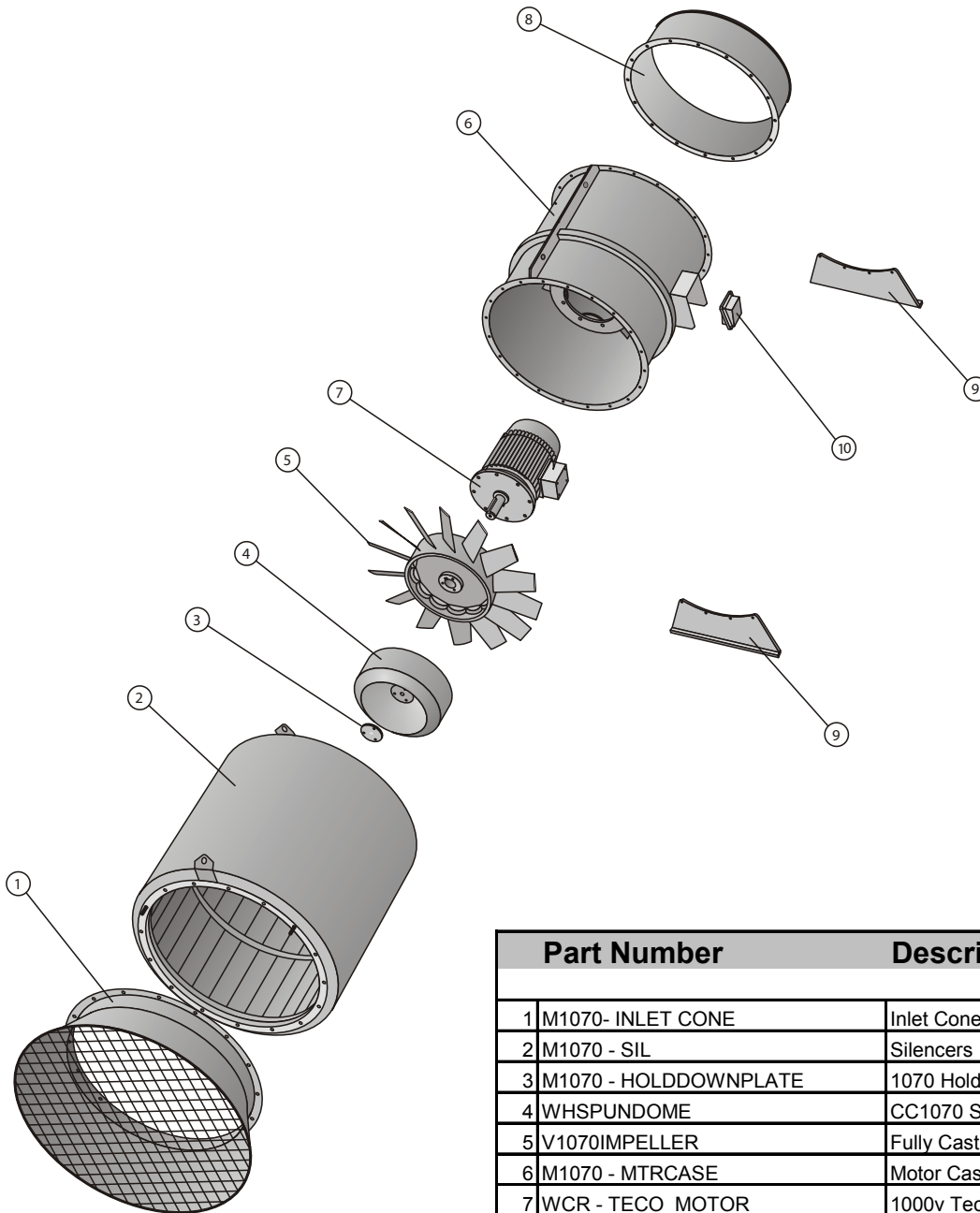
Exploded Layout Diagram



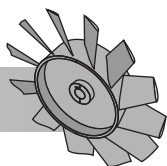
63 Christable Way
Landsdale 6065
Western Australia
Tel: +61 8 9249 9022
Fax: +61 8 9249 9126

website: www.clemcorp.com.au
email: sales@clemcorp.com.au
ABN: 54 115 959 683

- 1 x 37 kW , 30kW
- Fully Cast One - Piece Aluminium Alloy Impeller
- 1070mm Diameter Casing



Part Number	Description
1	M1070- INLET CONE Inlet Cone
2	M1070 - SIL Silencers
3	M1070 - HOLDDOWNPLATE 1070 Hold Down Plate
4	WHSPUNDOME CC1070 Spun dome
5	V1070IMPELLER Fully Cast one piece impeller
6	M1070 - MTRCASE Motor Casing
7	WCR - TECO MOTOR 1000v Teco motor
8	M1070 - VTA 1067 VTA to 1067mm Duct
9	M1070 - MOUNTING FOOT 1070 Mounting Foot
10	W1070 - TERMINAL BOX Terminal Box



Go with the flow....